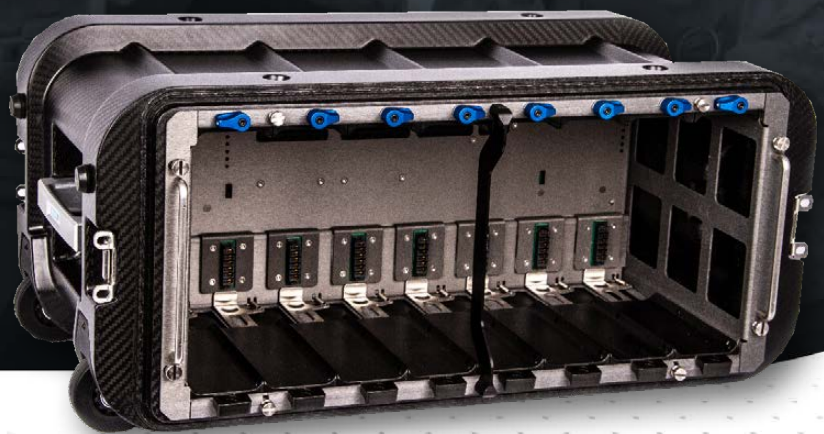


VOYAGER/8

The award-winning Voyager 8 is a carbon fiber, airline carry-on-size transit case with a rack-mountable UPS that can host up eight Voyager modules.

Ideal for Command Post deployments in either fixed or mobile locations, Voyager 8 is a mature product deployed in the field since 2012 but still providing class-leading capability per cubic inch.



KEY FEATURES

Supports the full range of Voyager network modules to provide:

- Routing & switching
- VoIP
- Server virtualization
- Radio integration
- WAN acceleration
- Storage
- UPS
- Satellite, terrestrial and cellular backhaul
- Can be configured as a tactical data storage network, tactical radio integration system, cross domain suite and more



reddot award 2016
winner



Portable



Rugged



Low Power

EMEA:

Klas,
4th Floor, One Kilmainham Square,
Inchicore Road, Kilmainham,
Dublin 8, Ireland
DO8 ETIW.
Tel: +353 1 6624270

US

Klas Government,
1101 30th Street NW,
Suite 500, Washington,
DC 20007.

Tel: +1 202-625-8315



www.klasgroup.com

KLAS

VOYAGER/8

Specifications



SIZE

- 22.5" W x 14.2" D x 10.1" H (571 x 360 x 257 mm)

WEIGHT

- 14.3 lb / 6.5 kg

CONSTRUCTION

- Aerospace-grade, multidirectional carbon fiber
- Milled aluminum hardware
- Neoprene O-ring watertight seal
- Manual pressure equalization valve

HANDLES

- Retractable extension handle
- Grab handles on top and bottom of case

Chassis

SIZE

- 19" W x 13.8" D x 8.7" H (482 mm x 350 mm x 222 mm)

WEIGHT

- 17.96 lb / 8.15 kg (excluding batteries)
- Each standard BB-2590 battery weighs 2.95 lb / 1.34 kg (Lower capacity BB-2590 batteries available for IATA compliance)

CONSTRUCTION

- Aluminum sheet metal
- Milled aluminum latches
- 19" rack mountable

OPERATING TEMPERATURE RANGE

- -35°C to 50°C

STORAGE TEMPERATURE RANGE

- -40°C to 85°C (without battery)

ELECTRICAL INPUT SPECIFICATION

- 10-36 VDC (25 Amp maximum)
- 90-264 VAC

ELECTRICAL OUTPUT SPECIFICATIONS

- 8 x 12 VDC outputs in backplane to power modules
- 8 x 48 VDC outputs in backplane for PoE support

- 600 W distributed to slots, battery charger and fans under AC supply, 100 W of which can be for PoE.
- 500 W distributed to slots and fans under DC supply.
- Optional 2 x AC outputs available when AC input is present (these outlets are not filtered. Please check the powered device for voltage range before using)
- Optional 2 x 12 VDC outputs

UPS

- 2 x BB-2590 batteries (available in high capacity for extended operation or lower capacity to comply with IATA regulations)

STANDARDS

- IEC 60529 IP67
- Built to MIL-STD-461
- Built to MIL-STD-810
- CE
- FCC CFR 47 Part 15 Subpart B Class A
- RoHS Directive
- IEC 61000-4-2 & IEC 61000-4-5



EMEA:

Klas,
4th Floor, One Kilmainham Square,
Inchicore Road, Kilmainham,
Dublin 8, Ireland
DO8 ETIW.
Tel: +353 1 6624270

US

Klas Government,
1101 30th Street NW,
Suite 500, Washington,
DC 20007.

Tel: +1 202-625-8315



www.klasgroup.com

KLAS